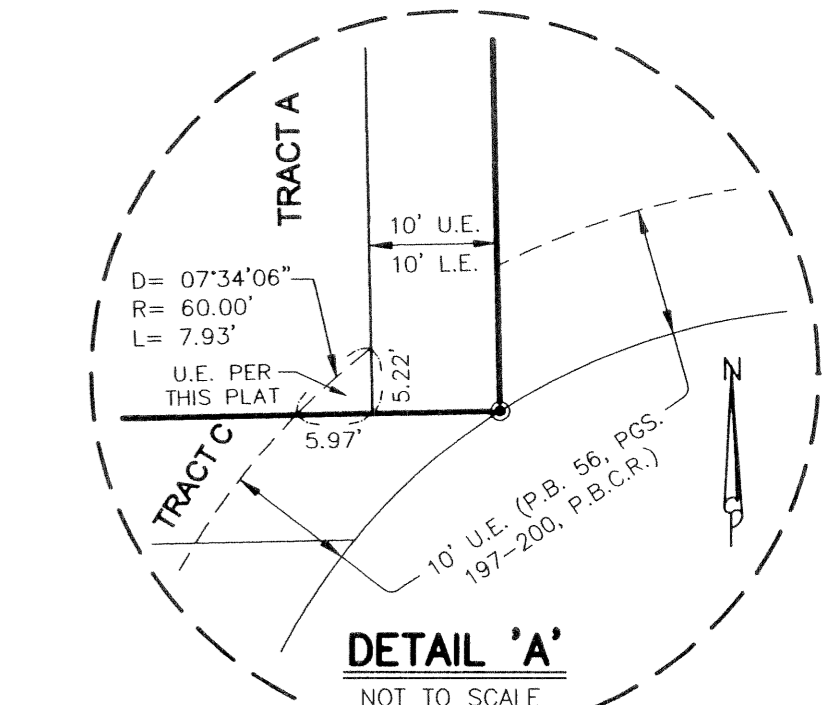


PINE GROVE FARM

BEING A REPLAT OF TRACT 6, BLOCK 21, PALM BEACH FARMS COMPANY PLAT NO. 3, AS RECORDED IN PLAT BOOK 2, PAGE 45 OF THE PUBLIC RECORDS OF PALM BEACH COUNTY, FLORIDA, TOGETHER WITH THOSE CERTAIN LANDS AS MENTIONED IN QUIT CLAIM DEED RECORDED IN OFFICIAL RECORDS BOOK 15359, PAGE 754 OF THE PUBLIC RECORDS OF PALM BEACH COUNTY, FLORIDA, ALL LYING AND BEING IN SECTION 15, TOWNSHIP 44 SOUTH, RANGE 42 EAST, CITY OF GREENACRES, PALM BEACH COUNTY, FLORIDA

STATE OF FLORIDA)
COUNTY OF PALM BEACH) S.S.
124
THIS INSTRUMENT WAS FILED FOR
RECORD AT _____ M.
THIS _____
DAY OF _____, 20____
AND DULY RECORDED IN:
PLAT BOOK _____
ON PAGE _____
DOROTHY WILKEN
CLERK CIRCUIT COURT.
BY: _____
DEPUTY CLERK.

SHEET 2 OF 2



CURVE TABLE			
CURVE	CENTRAL ANGLE	RADIUS	ARC LENGTH
C-1	11°50'56"	56.00'	11.58'
C-2	02°03'02"	115.00'	4.12'
C-3	07°09'41"	115.00'	14.37'
C-4	13°21'58"	75.00'	17.50'

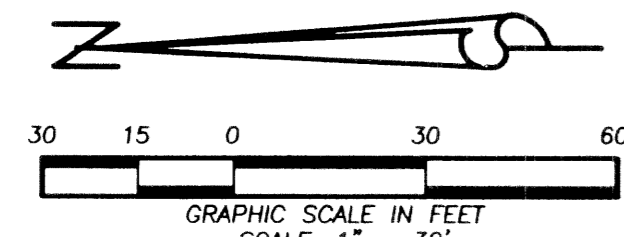
- LEGEND**
- CB = CHORD BEARING
 - CL = CHORD LENGTH
 - D = CENTRAL ANGLE
 - L = ARC LENGTH
 - L.E. = LANDSCAPE EASEMENT
 - LB# = LICENSED BUSINESS NUMBER
 - NR = NON-RADIAL
 - O.R.B. = OFFICIAL RECORD BOOK
 - P.R.M. = PERMANENT REFERENCE MONUMENT
 - P.B. = PLAT BOOK
 - P.B.C.R. = PALM BEACH COUNTY RECORDS
 - PG. = PAGE(S)
 - P.U.D. = PLANNED UNIT DEVELOPMENT
 - (P) = PER THE PLAT OF RIVER BRIDGE P.U.D. PARCEL 2B (P.B. 74, PGS. 4-6, P.B.C.R.)
 - (P-1) = PER THE PLAT OF RIVER BRIDGE P.U.D. PARCEL 2F PLAT 1 (P.B. 67, PGS. 146-147, P.B.C.R.)
 - R = RADIUS
 - R/W = RIGHT OF WAY
 - S.F.± = SQUARE FEET MORE OR LESS
 - U.E. = UTILITY EASEMENT
 - ⊕ = CENTERLINE

THIS INSTRUMENT WAS PREPARED BY:
David A. Bower, P.S.M. #5888 in the offices of
Dennis J. Leavy and Associates, Inc.
460 Business Park Way, Suite D
Royal Palm Beach, Florida 33411
(561) 753-0650

DENNIS J. LEAVY & ASSOCIATES, INC.
LAND SURVEYORS AND MAPPERS

460 BUSINESS PARK WAY • SUITE D • ROYAL PALM BEACH, FL • 33411
PHONE: (561) 753-0650 FAX: (561) 753-0290

SCALE: 1" = 30' CHECKED BY: D.J.L. DATE: 12/23/03
DRAWN BY: D.A.B. JOB NO.: 02-126-1 (CAD FILE 02-126PLAT)



**85' WIDE EASEMENT
RIGHT-OF-WAY FOR DRAINAGE
CANAL PURPOSES PER
O.R.B. 2626, PG. 1407, P.B.C.R.**